

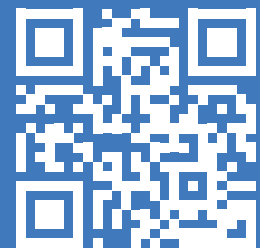


PANEL SPECIALISTS, Inc.



## WALL PANEL SYSTEMS

Enhancing the Environment  
in Which People Live, Learn,  
Heal, Work and Play.









# Table of Contents

(Click to  
Jump to  
the Page)

|                        |   |
|------------------------|---|
| Who We Are             | 4 |
| PSI Wall Panel Systems | 5 |
| Design, Flexibility    | 6 |
| Performance            | 6 |
| Value                  | 7 |

## DIVISIONS

|                     |    |
|---------------------|----|
| Education           | 8  |
| Healthcare          | 10 |
| Retail              | 12 |
| Sports & Recreation | 13 |
| Commercial Spaces   | 14 |
| Transportation      | 15 |

## SURFACE OPTIONS OVERVIEW

|   |    |
|---|----|
| High Pressure Laminates (HPL)               | 16 |
| Solid Phenolic Panels<br>(Compact Laminate) | 16 |
| Wood Veneers                                | 17 |
| Decorative Glass                            | 18 |
| Custom Laminates                            | 19 |
| Metal Laminates                             | 20 |
| Marker Board and Tack Board                 | 21 |
| Acoustical                                  | 22 |
| Clicwall                                    | 23 |
| Moldings                                    | 24 |
| Our Customer Promise                        | 27 |



## PSI WHO WE ARE

Located in Central Texas, just north of Austin, **Panel Specialists, Inc. (PSI) is a manufacturer of custom wall panels, partitions, casework, furniture, and wall systems.** We offer a wide variety of architectural and interior design products to meet the needs of **schools, hospitals, clinics, recreational centers, airports, offshore rigs + vessels, retail, and commercial interiors across the United States.**

**We remain rich in accolades for the wonderful products delivered since 1990, but it is our people who truly make a difference.** At PSI we help our customers execute their vision by delivering **quality products, on-time and within budget, all while providing excellent customer service along the way.**



# PSI WALL PANEL SYSTEMS

**PSI Wall Panel Systems are engineered, pre-finished modular wall surfacing products comprised of precision fit panels, moldings and trims.** PSI Wall Panels can help define any interior space.

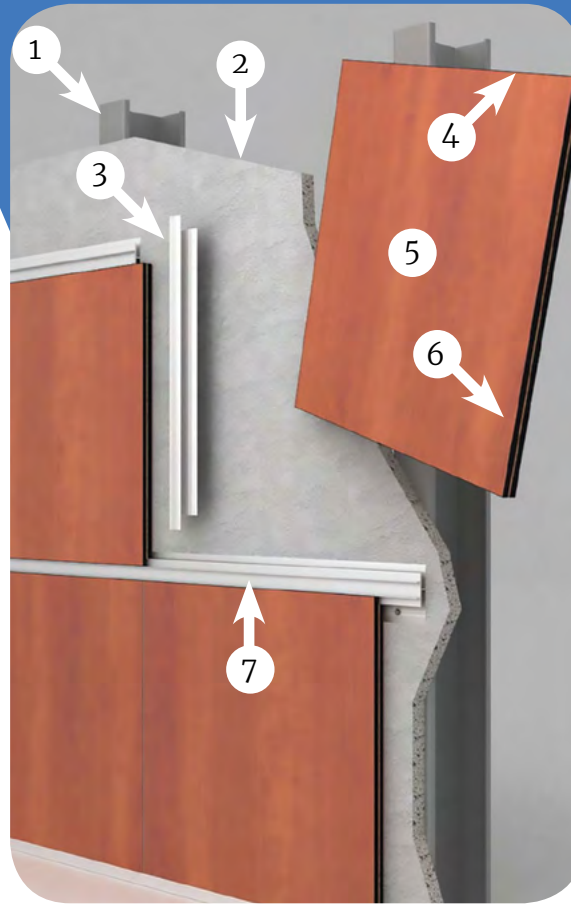
- Allow boundless creativity with unmatched design flexibility.
- Deliver both aesthetics and performance.
- Engineered for value, from ease of detailing and specification, to ease of installation.

Visit **panelspec.com** for more details.



*“The Killeen ISD Career Center has PSI wall paneling throughout the building. Three years later it still looks new with very little upkeep – very impressive for a high school campus. The panels look beautiful, hold up very well, and are easy to keep clean. These panels keep our hallways and building looking as new as the day we opened. I have been very pleased with this product and the employees of PSI. Great Job!!”*

**Alison C. Belliveau**  
CTE District Coordinator



- 1 – Wall framing
- 2 – Sub-wall surface (drywall, or existing block, tile or brick)
- 3 – Vertical divider molding
- 4 – Panels edgebanded with either .5mm or 3mm edgebanding
- 5 – Typical 7/16” thick panel
- 6 – Panels kerfed to engage into moldings
- 7 – Horizontal divider molding





## Design Flexibility

**Multiple surfacing materials and moldings can be brought together on a wall, providing a wide range of design and performance options.**

- Mix and match different surface materials, patterns, and panel sizes.
- Choose from a wide range of molding options to create visual interest.
- Custom solutions available.



## Performance

**PSI Wall Panels can perform, no matter the location.** Our panel options can deliver:

- Durable surfaces for high traffic areas such as school or hospital corridors, airline terminals and public gathering spaces.
- Surfaces to write on, communicate with, and pin art work to.
- Surfaces that look great and command attention.







## Value

Value is engineered into the PSI Wall Panel Systems. **With more than 1,000 installations over the past 33 years, PSI Wall Panels have proven to endure and maintain their original, signature looks.**

- PSI's attachment method allows for fast installation resulting in lower costs.
- Our low profile system (1/2" thick) costs less than many competing systems without sacrificing performance.
- Perfect for renovations, no demolition required – apply directly over older surfaces such as block, brick, tile, plaster, or drywall.

*"We were extremely happy to have PSI panels specified for our construction project. These panels are very durable and will stand up to the day-to-day abuse. The PSI panels are easy to clean and maintain, it was evident that PSI was a wise choice for Seminole ISD."*

**Jesse Greenfield**  
Director of Operations  
Seminole ISD

[Back to the Table of Contents](#)



# Education

[More Details](#)

PSI is a trusted partner for high-quality educational facilities from K-12 to postgraduate, allowing for a high degree of comfort, safety, aesthetics, and ease of maintenance while staying cost-efficient.



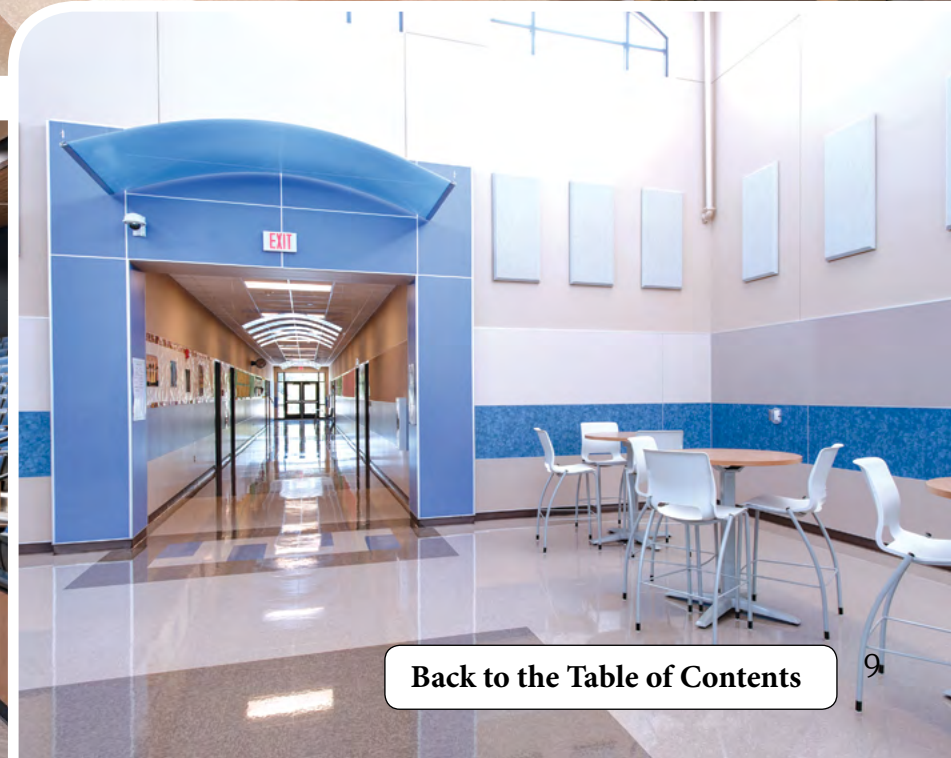
## Wall Panel Systems for Learning Environments

K-12 schools, colleges, and universities can be assured their interior wall panels will stand up to the rough and tumble lives of their students for many successive years and provide a home in which students can thrive. Superintendents, Principles, Facility Managers, Architects, and Interior Designers trust PSI for high quality, beautiful and cost-efficient wall surface options.



# Education

[More Details](#)



[Back to the Table of Contents](#)



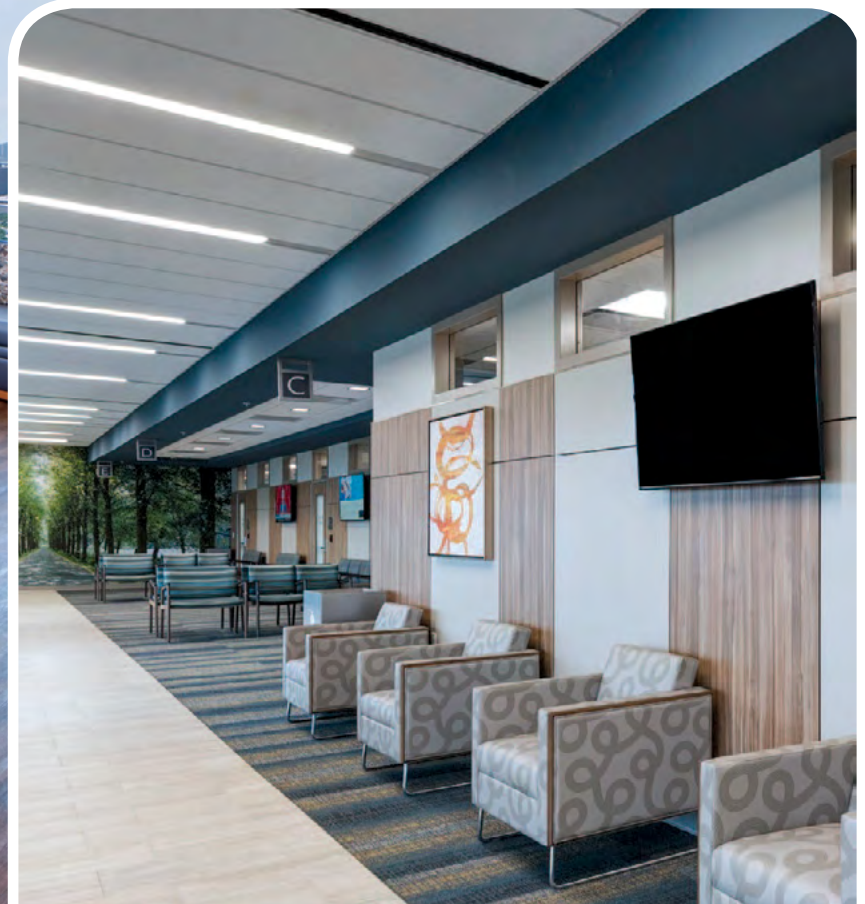
# Healthcare

[More Details](#)

Design flexibility combined with durability and easy maintenance make PSI's Healthcare solutions a smart, cost efficient-choice for facility designers and building management professionals.

## Wall Panels, Headwalls Designed for Healthcare

PSI's Healthcare products include millwork, wall panel systems, and headwall solutions. Each is designed to fit the evolving and growing demands of the healthcare industry. Design flexibility combined with durability and easy maintenance make PSI's Healthcare solutions a **smart, cost-efficient choice for facility designers and building management professionals.**





# Healthcare

[More Details](#)



[Back to the Table of Contents](#)



# Retail

[More Details](#)

With cost-efficient panels that are hygienic and durable, retail spaces can achieve a modern and inviting look whether you have a grocery store, a gas station, or a major retail warehouse.

## Wall Panel Systems for Retail Environments

PSI's products meant for retail spaces combine the modern look with the inviting, creating a cost-efficient solution that is applicable in a wide range of businesses from small grocery and convenience stores to big box retailers. Durable materials with low maintenance needs that support heavy foot traffic and extensive use and are ideal for environments where a lot of people are moving quickly while answering the need for clean and bright spaces. **PSI will work closely with retailers to effectively manage project specific inventories to ensure smooth program rollouts.**





# Wall Panel Systems for Sports + Recreation

**PSI's products excel at providing sustainable and cost-effective construction solutions for sports and recreation facilities by offering durability and customization without ever sacrificing the aesthetic appeal of the venue.** These solutions are used to offer an inviting and modern space to athletes and spectators, as well as lower overhead and construction benefits for managers and owners.

## Sports + Recreation

**PSI offers a wide variety of solutions for recreational facilities that are safe and durable as well as lowering the cost of maintenance compared to traditional types of construction.**

[More Details](#)



[Back to the Table of Contents](#)



# Commercial Spaces

By building clean, modern, and inviting environments, the **PSI panel solutions** offer options for commercial spaces that are appealing all while staying easy to maintain and cost-efficient.

[More Details](#)



## Wall Panel Systems for **Commercial Environments**

**All types of commercial spaces, including venues, office spaces, and all other commercial interiors benefit from the aesthetic and practical advantages PSI products have to offer.** The high-quality panels can easily create

corridors and separate rooms, as well as cover existing walls to modernize the environment and create a more inviting space for customers and a more comfortable workplace for those working inside.







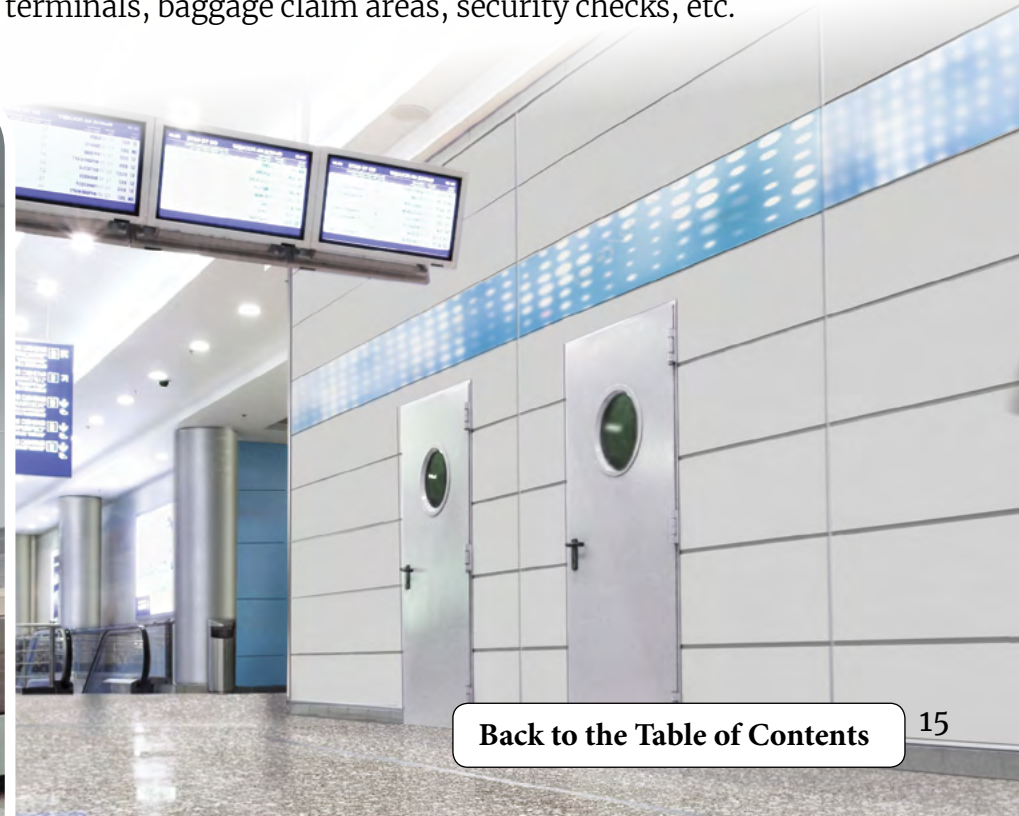
# Transportation

[More Details](#)

PSI's Phenolic Wall Panels are an ideal choice for environments like public transportation terminals, airports, and waiting areas requiring extra durability, impact resistance, and ease of maintenance.

## Wall Panel Systems for Public Transport

PSI Wall Panels offer a wide range of solutions for transportation venues such as bus stations, train stations, and airports. Combining **high-pressure laminate (HPL)** and **Compact laminate (Phenolic)** panels for extra durability makes it possible to create safe, inviting, durable and modernized environments. That unique proposition of joining HPL with compact laminate allows our clients to save without compromising on quality or durability. Future savings on maintenance and potential renovation when using other wall materials are also significant. Our compact laminate panels guarantee extreme durability in all crowded places – terminals, baggage claim areas, security checks, etc.



[Back to the Table of Contents](#)

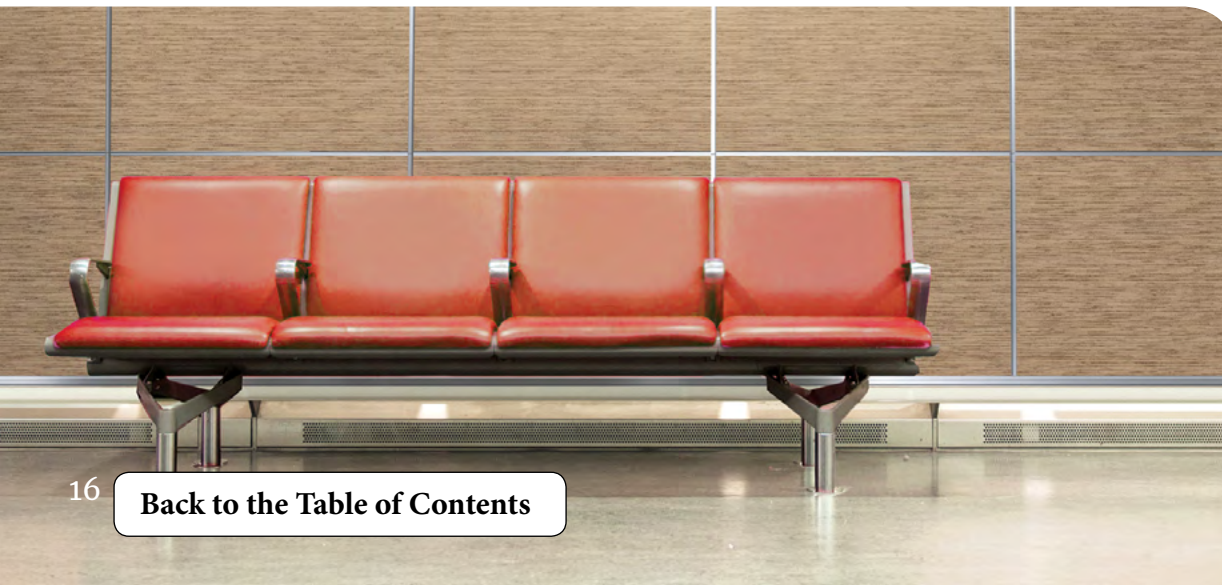


# Surface Options Overview

## High Pressure Laminate (HPL)

- **Abuse resistance** for high traffic areas.
- **Thousands of color and pattern options** from any of the available HPL manufacturers.
- **Easy to maintain** – dirt and graffiti can be easily wiped off.
- **Class I, II, and III fire ratings** available.
- **New realistic wood and stone patterns** represent a great value compared to real materials.

[More Details](#)



## Solid Phenolic Panels (Compact Laminate)

- **The ultimate high abuse, impact resistant** panels.
- **Large selection of color and pattern options** using the Wilsonart and Formica laminate décor offerings.
- **Seamless transition** between **solid phenolic panels** and lower cost **HPL faced panels**.
- **Class A and B fire ratings** available.

[More Details](#)

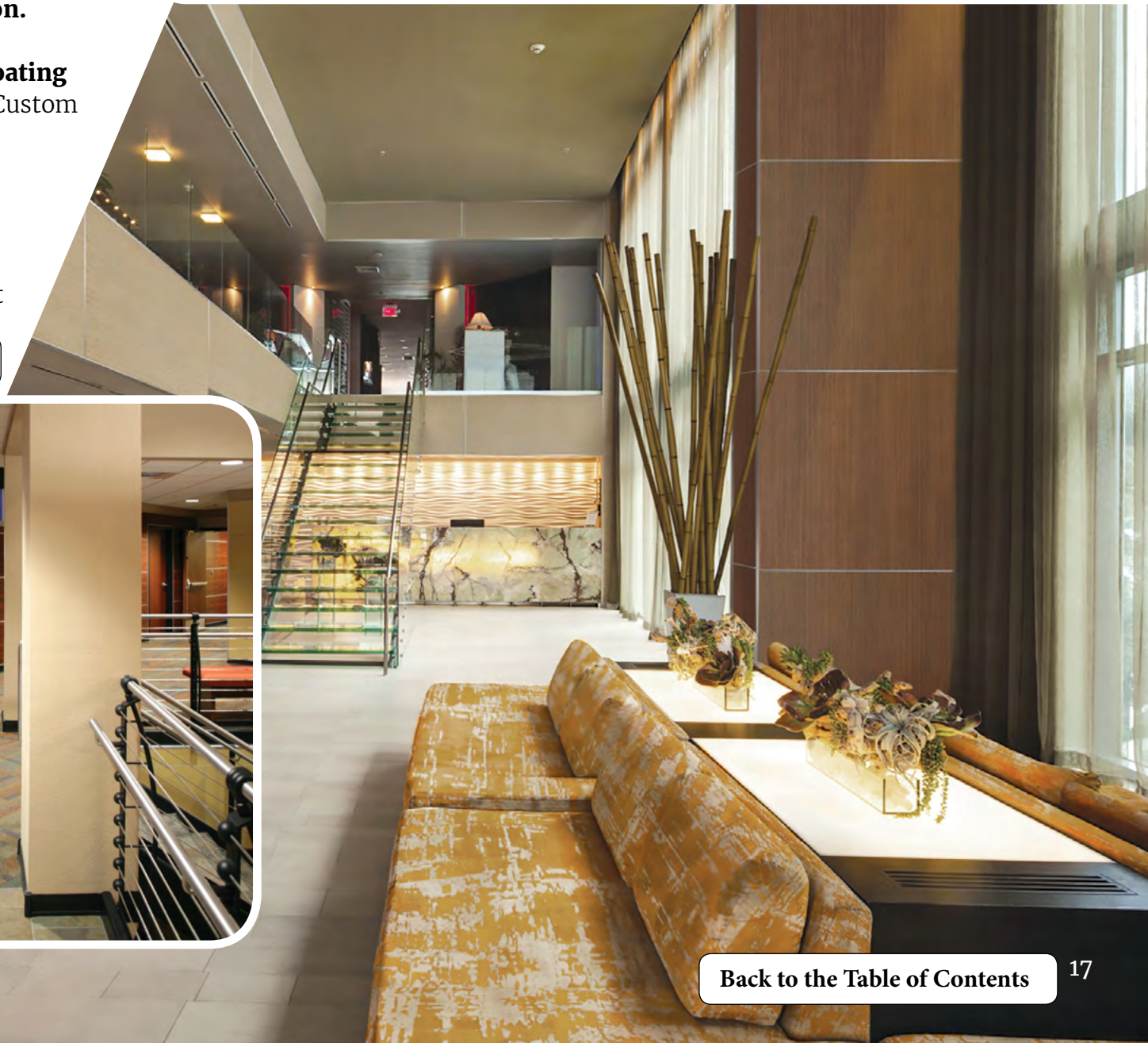


## Wood Veneers

- Warm, elegant, and classically beautiful.
- Veneers meet the **highest A - AA architectural grades designation**.
- **Finished with a durable, clear, environmentally friendly UV coating** in either a gloss or satin sheen. Custom stains are also available.
- **All panels have finished wood edges** to create a solid wood appearance.
- **Wide variety of veneer options available**, see the full offering at [panelspec.com](http://panelspec.com).

[More Details](#)

## Surface Options Overview



[Back to the Table of Contents](#)



# Surface Options Overview

## Decorative Glass

**Back painted glass is the perfect material for introducing color into a space, in a sleek and modern fashion.** Widely appreciated for its beauty and durability, back-painted glass is also a non-porous material, making it ideal for applications that require easy cleaning and anti-microbial properties.

**Digital printing elevates our glass surface offering** and allows for the creation of elegant, precise glass effects. This innovative technology **prints designs, patterns, and logos at 720 dpi, allowing personal artwork to be directly applied to any of our glass wall panels.**

[More Details](#)





# Surface Options Overview



## Custom Laminates

- **Art, informative graphics or full wall photographic murals can be incorporated into the wall.**
- Offers the same scratch and impact resistance as HPL, which far exceeds digitally printed vinyl wall coverings or painted graphics.
- **Display mascots, logos, brands, signage, historical collages, scenic photography and more.**

[More Details](#)



[Back to the Table of Contents](#)

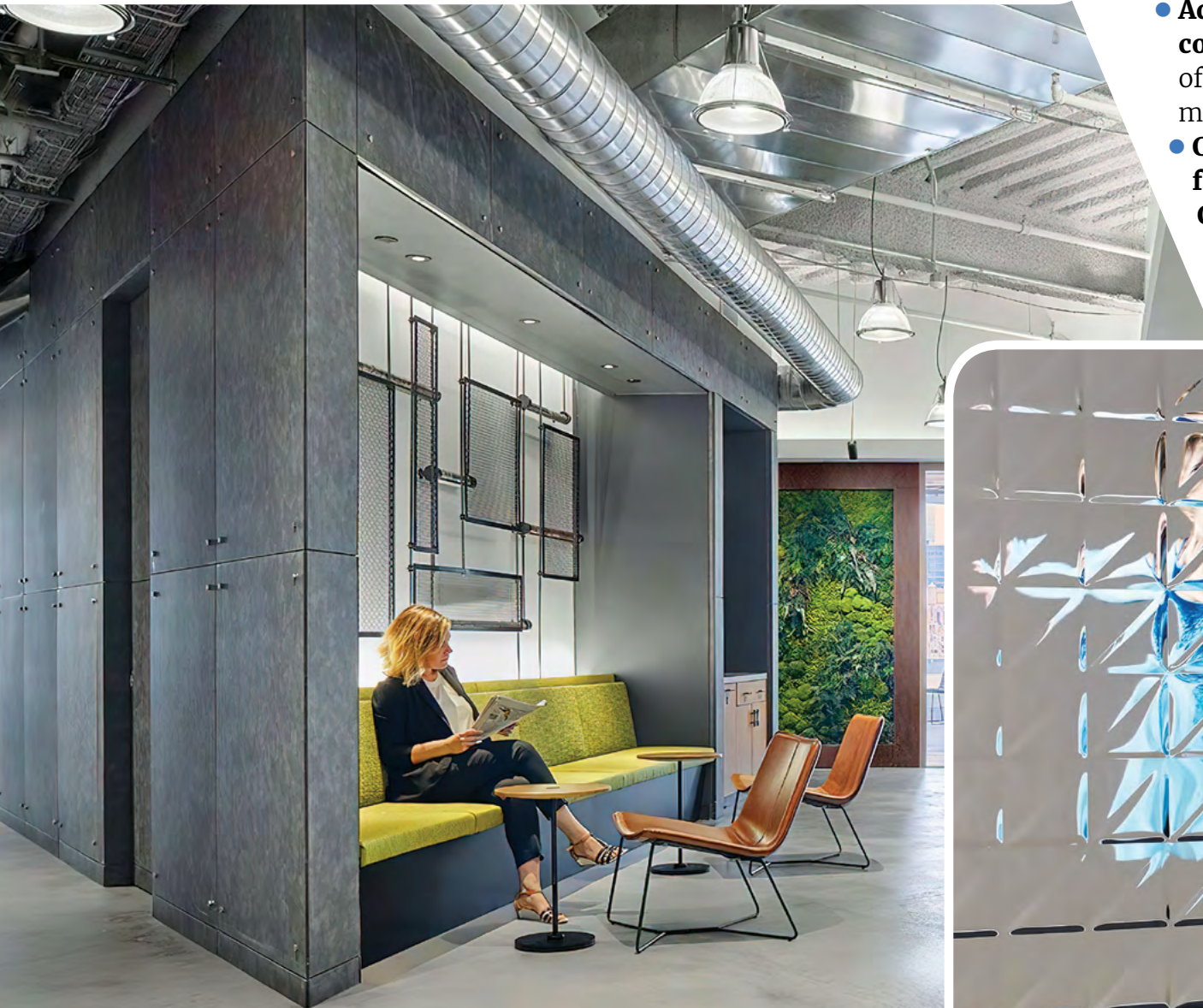


# Surface Options Overview

## Metal Laminates

- **Create industrial or modern visuals** with full walls of lustrous metal finishes.
- **Add flash with accent bands of color and reflected light** in a field of otherwise subdued wall finish materials.
- **Choose aluminum metal laminates** from **Wilsonart, Formica, Chemetal, Moz or ATI.**

[More Details](#)



[Back to the Table of Contents](#)







[More Details](#)

# Surface Options Overview

## Marker Board and Tack Board

- These working wall panels are an integral part of the wall, not hangon accessories.
- **Marker Board surface is porcelain enameled steel** – making it magnetic, non-ghosting, easy to erase, and long lasting.
- Tackable panels are made using Forbo bulletin board, **a self-healing, cleanable, tack surface available in 15 color-thru colors.**



[More Details](#)

|   |  |   |   |  |
|---|--|---|---|--|
| <br>2162 duck egg    | <br>2166 nutmeg spice     | <br>2182 potato skin       | <br>2186 blanched almond | <br>2187 brown rice   |
| <br>2204 poppy seed | <br>2206 oyster shell    | <br>2208 mushroom medley  | <br>2207 cinnamon bark  | <br>2209 black olive |
| <br>2210 hot salsa | <br>2211 tangerine zest | <br>2212 fresh pineapple | <br>2213 baby lettuce  | <br>2214 blue berry |

[Back to the Table of Contents](#)



# Surface Options Overview

## Acoustical

Reducing unwanted noise in interior environments can contribute to many desired effects: enhanced learning in classrooms, better productivity in offices, more intelligible speech in group and conference settings, and less **distractive noise in large open areas.**

PSI Acoustic Panels provide the perfect blend of exceptional value, aesthetics and performance to meet all of these objectives. Created for compatibility with our complete line of PSI molding systems, our Acoustic Panels are **the solution that delivers all the practicalities you need with the tailored elegance you expect from the leaders in commercial wall panel systems.**

[More Details](#)

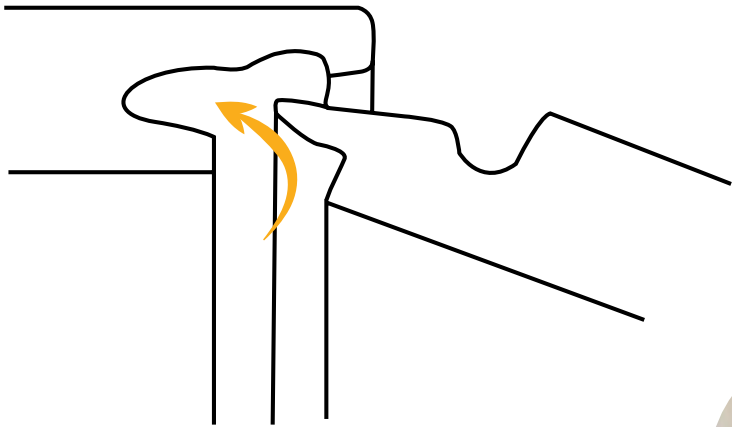




# Surface Options Overview

## Clicwall®

Clicwall is an innovating locking system for wall panels. It uses a ground-breaking patented click technology where the tongue and groove profiles are milled directly into the material itself. A sturdy connection is thus guaranteed



This glueless locking technology is **suitable for all kinds of materials** such as scratch-resistant wall panels with a washable outer layer for ease of maintenance, decorative medium and high-density fiber boards, melamine faced chipboards, etc. **Thanks to this technology, the panels click quickly and effortlessly into one another, creating a seamless looking wall.**

## Innovative tongue and groove technology makes installation 5x faster!

Each ClicWall® panel has a tongue on one lengthwise edge and a groove on the other. The tongue and groove profiles allow panels to be assembled by either angling or snapping them together.

The panels are installed by an angular rotation movement (VET). The profile of the two short edges is squared as the panels are placed from floor to ceiling. The installation of the panels is five times faster than traditional systems such as plasterboard since it eliminates drying time. It is an all-in-one system so there is no need for plaster or paint which also makes for a clean, quiet and dust free installation.





# Moldings

## Molding Systems & Trims

- Brings wall panels **together beautifully**.
- **Multiple design options** are available to create panel joints in a range of sizes from a minimal 1/16" width to a bold 1" width.
- **Aluminum moldings are available in a standard clear anodized or black finish.** Custom colors are available to either minimize or highlight their appearance.
- **3mm thick edge banding** can also be used on high pressure laminate faced panels to minimize or highlight the panel joints.
- Moldings allow panels to be **aligned vertically or horizontally**.
- **A variety of edge trim options and corner options** complete the wall panel installation.

[More Details](#)



(Click on the Photo for More Details)



System 103L Corner /  
304 Edge Trim



System 310



System 310EB



System 310EB/310



System 312



System 312/310



System 314



System 410



System 412



System 510EB



System 603L Corner /  
604 Edge Trim



System 631



System 631/632



System 632



System 632/631





*“Our walls still look brand new, without any scuffs, dents, or scratches. This is an amazing product and I would be proud to recommend it to anyone looking for a long-term investment in wall coverings.”*

**Paul Miller**, Principal  
H.G. Isbill Junior High  
McGregor ISD

[Back to the Table of Contents](#)



# Our Customer Promise

**Outstanding customer service is the foundation of PSI. We will work closely with you each step of the way, from initial design consultation through delivery.** We also follow-up after each project to get your feedback, and then use that feedback to enhance the way we do business in the future. We look forward to working with you and delivering on this promise.

*“At PSI, our long-term success rests in the hands of our successful customers. We put our customers first so we can last.”*

**Elliot Germany**  
President, Panel Specialists



[Back to the Table of Contents](#)





# HOW CAN PSI HELP YOU?

**800-947-9422**

**[www.panelspec.com](http://www.panelspec.com)**

