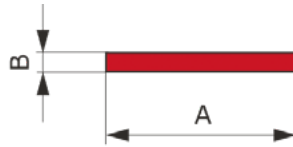
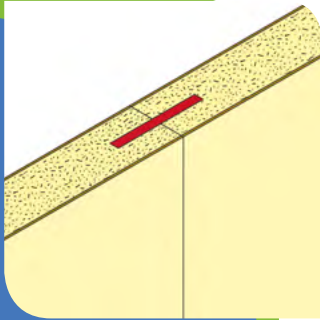


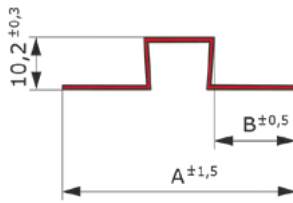
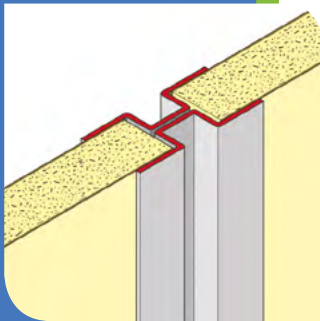
Metal Profiles - Bulkhead Jointing Sections



Steel spline, deburred and straightened

No.	Thickness (mm)	A (mm)	B (mm)	Weight (lbs/ft)
S01	.12	25	3	.37

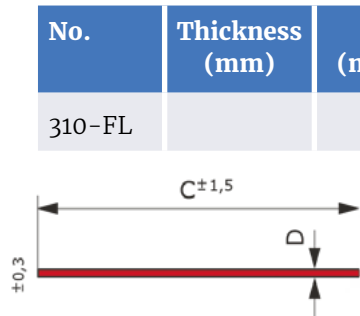
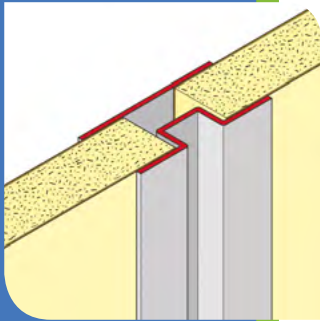
Material: galvanized steel.
Standard length: 96" and 120".
 Other lengths **available on request.**



Omega-steel profile

No.	Thickness (mm)	A (mm)	B (mm)	Weight (lbs/ft)
310	.8	30	10	.39
*316	.8	46	16	.60

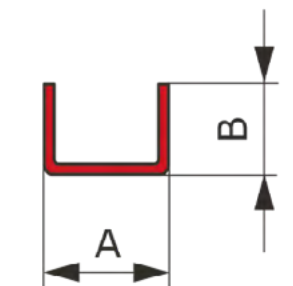
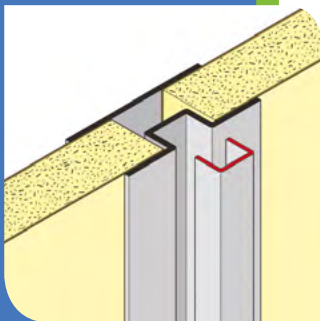
Material: galvanized or stainless steel.
 Powder-coated finishes available on request.
Standard length: 96" and 120".
 Other lengths **available on request.**
 Screwed every 12 inches.
 *Non-stock – **custom order.**



Flat bar for omega profile

No.	Thickness (mm)	A (mm)	B (mm)	C (mm)	D (mm)	Weight (lbs/ft)
310-FL				35	1.25	.43

Material: galvanized steel.
Standard length: 96" and 120".
 Other lengths **available on request.**
 Screwed every 12 inches.

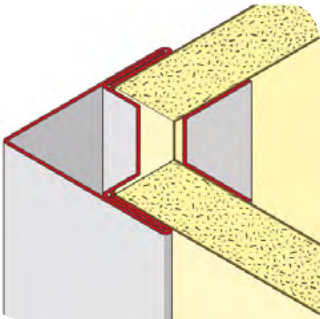


Screw cover strip for 310/316

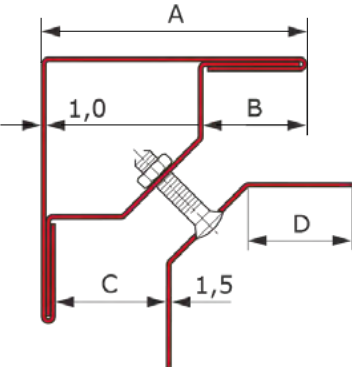
No.	Thickness (mm)	A (mm)	B (mm)	Weight (lbs/ft)
U10	.5	7.6	9	0.7
*U20	.5	12.2	9	0.8

Material: galvanized or stainless steel.
 Powder-coated finishes available on request.
Standard length: 96" and 120".
 Other lengths **available on request.**
 *Non-stock – **custom order.**

Metal Profiles - Corner Jointing Sections

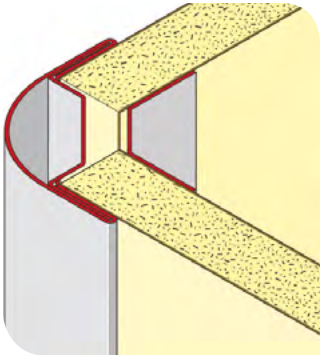


No.	Thickness (mm)	A (mm)	B (mm)	C (mm)	D (mm)	Weight (lbs/ft)
*90-E	-	51	20	16-25	20	1.57

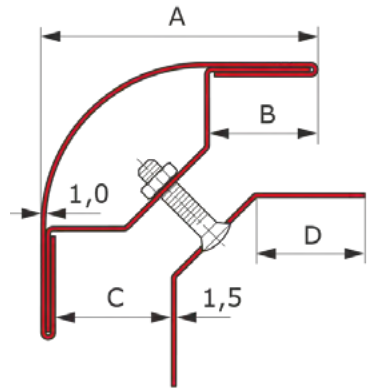


Material: galvanized or stainless steel.
 Powder-coated finishes **available on request.**
Standard length: 96" and 120".
 *Non-stock – **custom order.**

Outside and inside corner, square



No.	Thickness (mm)	A (mm)	B (mm)	C (mm)	D (mm)	Weight (lbs/ft)
*90-R	-	51	20	16-25	20	1.57

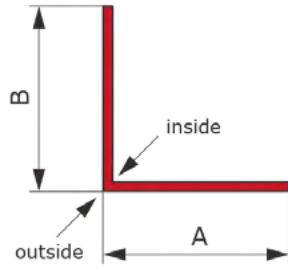
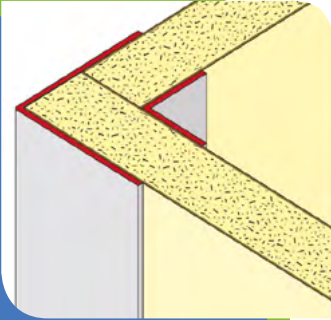


Material: galvanized or stainless steel.
 Powder-coated finishes **available on request.**
Standard length: 96" and 120".
 *Non-stock – **custom order.**

Outside and inside corner, rounded



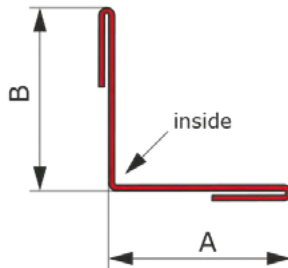
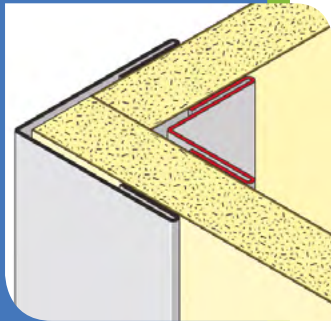
Metal Profiles - Corner Jointing Sections



Outside and inside corner

No.	Thickness (mm)	A (mm)	B (mm)	Weight (lbs/ft)
530	1.5	30	30	.45
545	1.5	45	45	.67

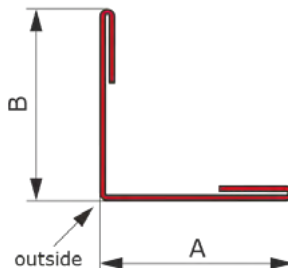
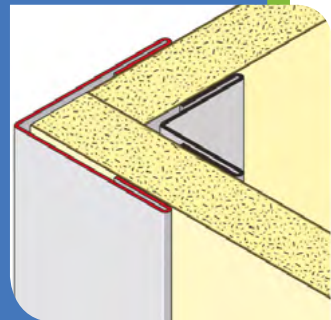
Material: galvanized or stainless steel.
 Powder-coated finishes **available on request.**
Standard length: 96" and 120".
 Other lengths and flange widths **available on request.**



Inside corner - hemmed edge

No.	Thickness (mm)	A (mm)	B (mm)	Weight (lbs/ft)
*501	.8	Specialty sizes		-

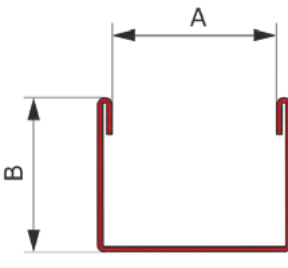
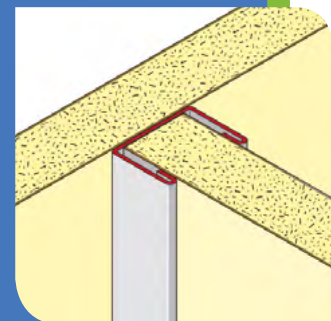
Material: galvanized or stainless steel.
 Powder-coated finishes **available on request.**
 *Non-stock - **custom order.**



Outside corner - hemmed edge

No.	Thickness (mm)	A (mm)	B (mm)	Weight (lbs/ft)
*502	.8	Specialty sizes		-

Material: galvanized or stainless steel.
 Powder-coated finishes **available on request.**
 Non-stock - **custom order.**

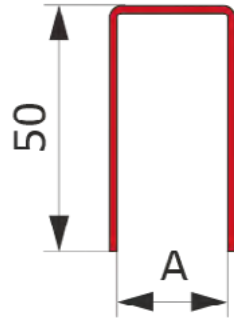
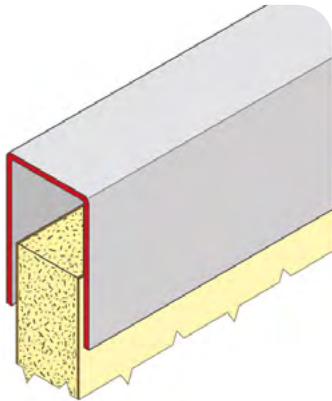


U-section - hemmed edge

No.	Thickness (mm)	A (mm)	B (mm)	Weight (lbs/ft)
*503-10	.8	12	25	0.50
*503-12	.8	14	25	0.51
*503-16	.8	18	25	0.54
*503-19	.8	21	25	0.56

Material: galvanized or stainless steel.
 Powder-coated finishes **available on request.**
Standard length: 96" and 120".
 Other lengths **available on request.**
 *Non-stock - **custom order.**

Metal Profiles - Top And Bottom Jointing Sections



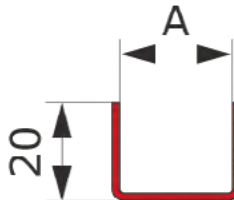
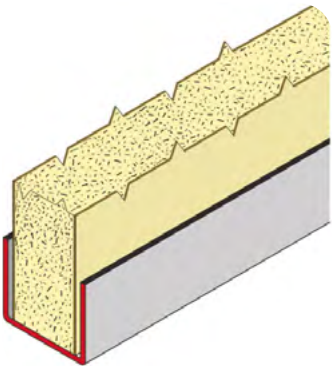
Top U-profile

No.	Thickness (mm)	A (mm)	Weight (lbs/ft)
*50/13	1.5	13	-
*50/15	1.5	15	-
*50/19	1.5	19	-
*50/22	1.5	22	.94

Material: galvanized or stainless steel.

Powder - **coated finishes available.**

Standard length: 96". Non stock - **custom Order.**



Bottom U-profile

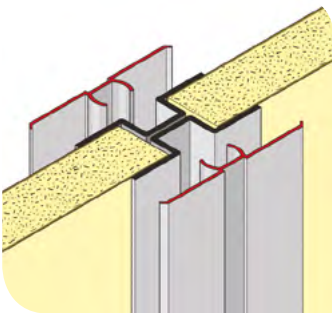
No.	Thickness (mm)	A (mm)	Weight (lbs/ft)
*113/20	1.5	13	-
*115/20	1.5	15	-
*119/20	1.5	19	-
*122/20	1.5	22	.48

Material: galvanized or stainless steel.

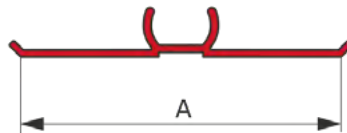
Powder - **coated finishes available.**

Standard length: 96". Non stock - **custom Order.**

PVC profiles – PVC Cover Profile



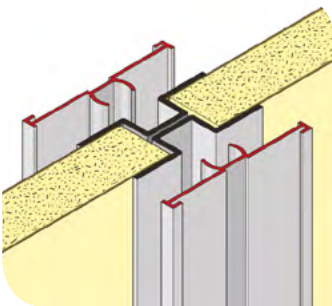
Cover profile



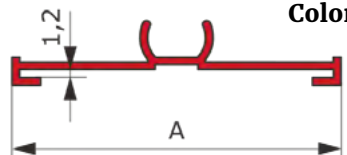
No.	Thickness (mm)	A (mm)	Weight (lbs/ft)
1496	1.0	32.5	0.05

Colors: white, almond, gray.

Length: 96".



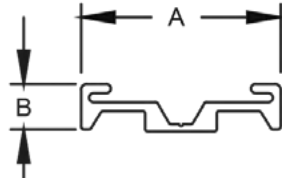
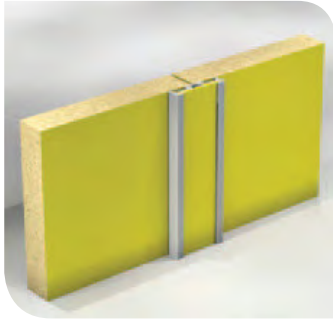
Cover profile for HPL inserts



No.	Thickness (mm)	A (mm)	Weight (lbs/ft)
6476	1.0	34.5	0.05

Colors: white, almond. **Length:** 96".

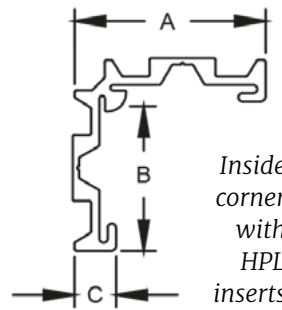
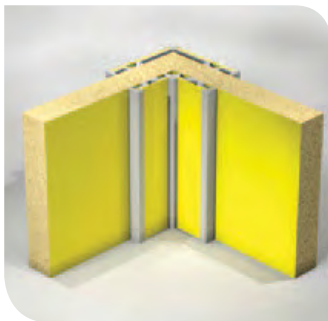
Aluminum Profiles



Batten with HPL insert

No.	A (mm)	B (mm)	Weight (lbs/ft)
700-125	34.9	8.0	0.2

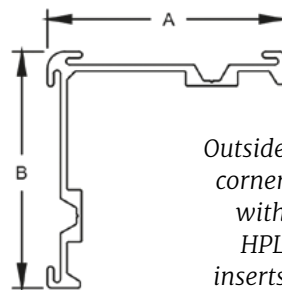
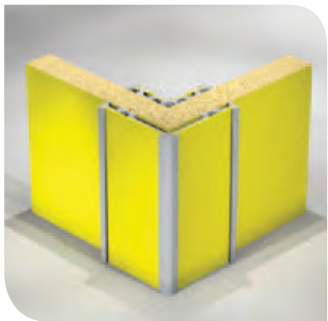
Material: Anodized Aluminum.
 Powder-coated finish **available on request**.
Standard length: 96" and 120".
Choose color of HPL inserts.



Inside corner with HPL inserts

No.	Thickness (mm)	A (mm)	B (mm)	Weight (lbs/ft)
700-250	8.0	41	32	0.4

Material: Anodized Aluminum.
 Powder-coated finish **available on request**.
Standard length: 96" and 120".
Choose color of HPL inserts.



Outside corner with HPL inserts

No.	Thickness (mm)	A (mm)	B (mm)	Weight (lbs/ft)
700-375	8.0	57	57	0.4

Material: Anodized Aluminum.
 Powder-coated finish **available on request**.
Standard length: 96" and 120".
Choose color of HPL inserts.

