



PANEL SPECIALISTS, Inc.

# Case Study

## mHouse Project

### Watertown, Wisconsin

#### PSI PARTNERS WITH WILSONART TO SPONSOR MHOUSE PROJECT

**I**n late August, Panel Specialists, Inc. teamed up with Wilsonart International of Temple, TX, on a residential home design project known as the mHouse, or Materialicious House.

The mHouse, located in Watertown, Wisconsin, is a residential research lab for tomorrow's modern home created by Surface & Panel Magazine and Materialicious. Featuring the latest innovations of the surface and panel industry, the mHouse aims to redefine "what's possible" in residential and commercial interiors. With over 25 sponsoring companies, mHouse shows unique applications of the industry's best decorative surface materials.

As a participating sponsor, **Wilsonart sought out PSI's help to produce a wall surface solution to display an 8 ft by 21 ft canvas painting, created by Milwaukee artist, Reginald Baylor, to cover a wall within the mHouse.**

For artist Reginald Baylor, converting his original canvas work into a custom laminate mural seemed nearly impossible. Installing a wall panel system that fit seamlessly to a mural of that size posed many challenges.

*"The mHouse is a very high quality home with many exacting details. The art and the system match the quality and design intent perfectly."*

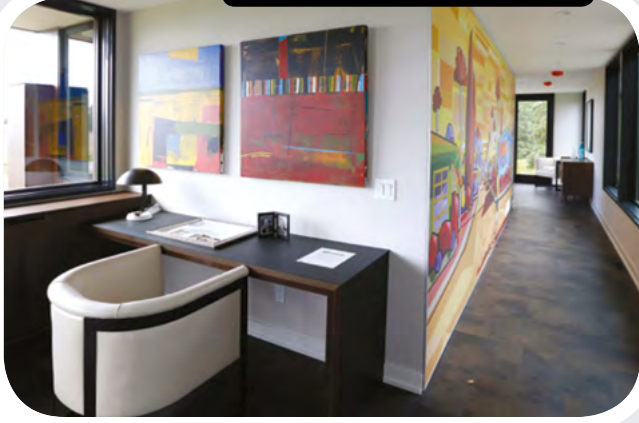
Working with mHouse interior designer, Amy Carman, and architect, John Vetter, PSI advised the mHouse team to use the System 310, a wall panel molding option that allowed for a minimal 1/16" wide reveal to focus on the art at hand.

*A detailed look at the 8 ft by 21 ft canvas painting created by Milwaukee artist, Reginald Baylor. The wall panel system allows for the narrowest joint line between adjoining panels.*



Image provided by mHouse photographer, Gary Porter

Image provided by Ryan Hainey.



The customized wall panel system divides the office work space from the hallway within the mHouse.

Image provided by Ryan Hainey.



The wall panel system, lighting and glass pull together for a beautiful shadowbox effect of the mural.

**“PSI’s contribution really made the art wall a complete success. Without the PSI Wall Panel System, the art would have never looked finished and quite frankly would have been nearly impossible to install,”** said

John Aufderhaar, Publisher of Surface & Panel Magazine and President of Bedford Falls Communications. A progressive panel system that provides durability and functionality, PSI’s moldings allowed the mural to be aligned perfectly. The system brought each panel together for a beautifully polished and cohesive look.

**“The interior designer wanted the entire wall covered in art, which meant that encasing**

**extrusions, top and bottom were within 1/2 inch or less of the ceiling and floor. Keeping tolerances like that were only possible with PSI,”** said Aufderhaar.

Being the first time PSI has provided a custom panel system in a residential environment, the project proved to be a complete and beautiful success.

**“The mHouse is a very high quality home with many exacting details. The art and the system match the quality and design intent perfectly,”** said Aufderhaar.

The mHouse grand opening was held in Watertown, WI on September 30th, 2015. ■

Image provided by Ryan Hainey.



An exterior view of the mHouse featuring PSI’s wall panel system.

**For more information on PSI products and services, please visit [www.panelspec.com](http://www.panelspec.com) or contact us today!**

